

**fanidhar<sup>®</sup>**  
**MEGA FOOD PARK**



khet se bazaar tak...



APPROVED

**fanidhar<sup>®</sup>**  
**MEGA FOOD PARK**

khet se bazaar tak...



In the year of 2005, MOFPI (Ministry of Food Processing Industries, Government of India) had launched the 'Mega Food Park' scheme for development of food processing infrastructure in India, for reduction in wastage of perishable commodities in improving processing and increasing farmer's income.

Under this thought '**FANIDHAR GROUP**' took the opportunity to set up a dedicated Food Park exclusively for food processing industries in Mehsana region with a motto of linking farmers to the processing and markets, aptly put forward as

'khet se bazaar tak'



## GROUP COMPANIES



## ABOUT FANIDHAR GROUP

THE FANIDHAR GROUP WAS ESTABLISHED BY MR. KRUNAL PATEL AND MR. RUSHABH PATEL IN 2009 TO TAP THE POTENTIAL AVAILABLE IN INDIAN AGRICULTURE AND REAL ESTATE SECTOR. FOLLOWING ENTITIES WERE CREATED DURING THE COURSE OF ITS JOURNEY.

- FANIDHAR AGROTECH PVT. LTD. ( FOR AGRI COMMODITY TRADING ACTIVITY )
- FANIDHAR ENTERPRISES PVT. LTD. (FOR EXPORTS / IMPORTS)
- FANIDHAR FINANCIAL SERVICES PVT. LTD. ( FOR EXTENDING FINANCIAL ASSISTANCE TO AGRICULTURE SECTOR/ FARMERS )
- FANIDHAR AGRICULTURE & RESEARCH FOUNDATION (TO CARRY OUT PIONEERING RESEARCH AND DEVELOPMENT ACTIVITY IN AGRI SECTOR)
- SAPTARISHI AGRO INDUSTRIES LTD. (MUSHROOM CULTIVATION AND PROCESSING)
- FANIDHAR MEGA FOOD PARK PVT. LTD. (MEGA FOOD PARK INFRASTRUCTURE)
- FANIDHAR CONSTRUCTIONS & DEVELOPERS PVT. LTD. ( FOR REAL ESTATE DEVELOPMENT )



**10** YEARS  
of rich experience 





FANIDHAR MEGA FOOD PARK PVT LTD WAS ESTABLISHED IN 2010 , TO ESTABLISH A MEGA FOOD PARK UNDER THE MEGA FOOD PARK SCHEME OF MINISTRY OF FOOD PROCESSING INDUSTRIES.

### VISION

TO SUPPORT AND REALIZE THE AGRI AND FOOD PROCESSING POTENTIAL OF INDIA.

### MISSION

TO BECOME A LEADING FOOD PROCESSING AND AGRI INFRASTRUCTURE PROVIDER IN INDIA.

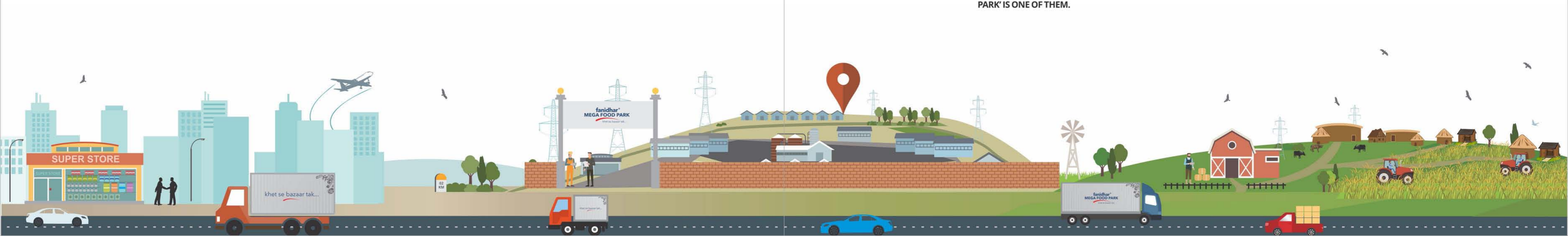
## ABOUT MEGA FOOD PARKS

THE MEGA FOOD PARK SCHEME IS BASED ON "CLUSTER" APPROACH AND ENVISAGES CREATION OF STATE OF ART SUPPORT INFRASTRUCTURE IN A WELL-DEFINED AGRI/ HORTICULTURAL ZONE FOR SETTING UP OF MODERN FOOD PROCESSING UNITS ALONG WITH WELL-ESTABLISHED SUPPLY CHAIN. MEGA FOOD PARK TYPICALLY CONSIST OF SUPPLY CHAIN INFRASTRUCTURE INCLUDING COLLECTION CENTERS, PRIMARY PROCESSING CENTERS; CONVERSION CENTRES / VALUE ADDITION CENTRES IN THE FORM OF CENTRAL PROCESSING CENTRE (CPC) AND DISTRIBUTION LOGISTICS.

A TYPICAL CPC WILL HAVE AROUND 39 FULLY DEVELOPED PLOTS FOR ENTREPRENEURS TO SET UP FOOD PROCESSING UNITS.

THE MEGA FOOD PARK PROJECT IS IMPLEMENTED BY A SPECIAL PURPOSE VEHICLE (SPV) WHICH IS A BODY CORPORATE REGISTERED UNDER THE INDIAN COMPANIES ACT. SUBJECT TO FULFILLMENT OF THE CONDITIONS OF THE SCHEME GUIDELINES.

**UNDER THIS INITIATIVE, THE MINISTRY OF FOOD PROCESSING INDUSTRIES (MOFPI) THE GOVERNMENT OF INDIA HAS APPROVED 42 MEGA FOOD PARKS AND 'FANIDHAR MEGA FOOD PARK' IS ONE OF THEM.**





## GOVERNMENT SUPPORT



THIS PROJECT IS BEING ESTABLISHED UNDER THE MEGA FOOD PARK SCHEME OF MINISTRY OF FOOD PROCESSING INDUSTRIES GOVERNMENT OF INDIA.



THIS PROJECT IS ALSO SUPPORTED BY GOVT OF GUJARAT UNDER ITS INDUSTRIAL POLICY 2013, FOR INDUSTRIAL PARKS.

### Supported With

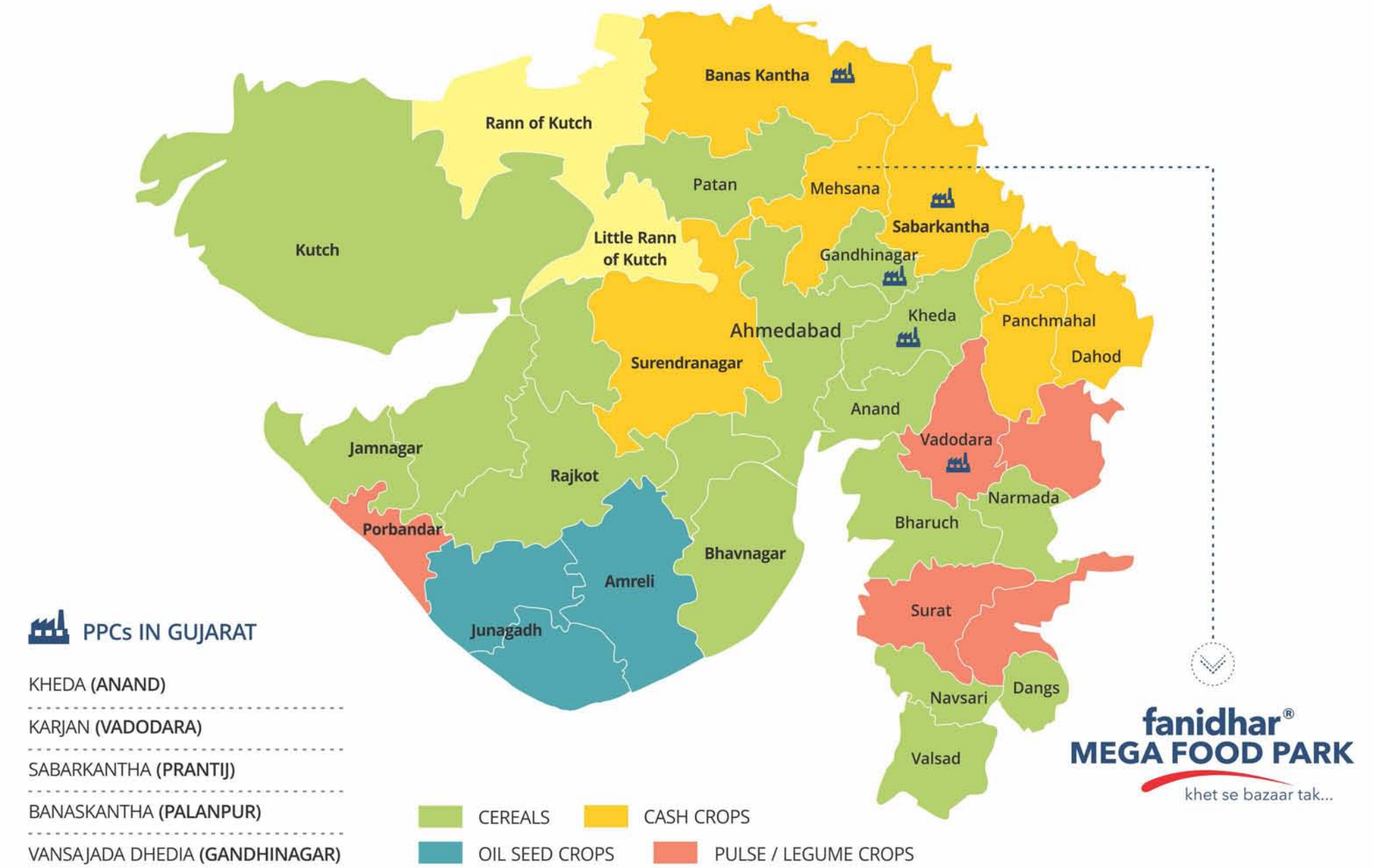


**THE VIBRANT GUJARAT GLOBAL SUMMIT** : WHICH STARTED IN 2003 TO REKINDLE THE PACE OF INVESTMENTS IN THE STATE, HAS SINCE ESTABLISHED ITSELF AS ONE OF THE MOST IMPORTANT INTERNATIONAL BUSINESS EVENTS IN THE COUNTRY. VIBRANT GUJARAT GLOBAL SUMMIT IS AN EXAMPLE OF THE VISIONARY APPROACH OF THE GOVERNMENT OF GUJARAT TOWARDS INCLUSIVE AND SUSTAINABLE DEVELOPMENT BY ENSURING POLICY COHERENCE AND EFFECTIVE INVESTMENT PROMOTION.



**MAKE IN INDIA**: THE VISION, NEW PROCESSES, SECTORS, INFRASTRUCTURE & MINDSET. PRIME MINISTER NARENDRA MODI LAUNCHED THE MAKE IN INDIA INITIATIVE ON SEPTEMBER 25, 2014, WITH THE PRIMARY GOAL OF MAKING INDIA A GLOBAL MANUFACTURING HUB, BY ENCOURAGING BOTH MULTINATIONAL AS WELL AS DOMESTIC COMPANIES TO MANUFACTURE THEIR PRODUCTS WITHIN THE COUNTRY.

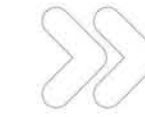
## AGRICULTURE MAP OF GUJARAT SHOWING PRIMARY PROCESSING CENTERS (PPC)







GATEWAY TO A REVOLUTIONARY FOOD PROCESSING INFRASTRUCTURE.



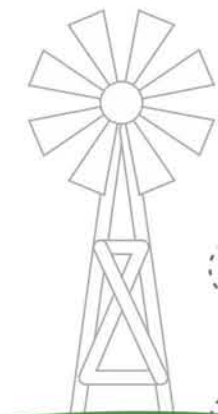
FANIDHAR MEGA FOOD PARK IS AN APPROVED PROJECT BY  
MINISTRY OF FOOD PROCESSING INDUSTRIES, GOVERNMENT OF INDIA.

THIS PROJECT CONSISTS OF FOOD PROCESSING AND SUPPLY CHAIN INFRASTRUCTURE  
INCLUSIVE OF COLLECTION CENTERS, PRIMARY PROCESSING CENTERS, CENTRAL  
PROCESSING CENTER, COLD CHAIN LOGISTICS ALONG WITH 39 ENTIRELY DEVELOPED PLOTS  
FOR ENTREPRENEURS TO SET UP FOOD PROCESSING UNITS.

Project is spread over  
**52.68**  
Acres of land



IN MUDARDA, Tal: Jotana  
(Dist. Mehsana, Gujarat)





OVER VIEW OF THE MEGA FOOD PARK





## FEATURES

NA, NOC  
TITLE CLEAR PLOTS



39 INDUSTRIAL PLOTS  
OF VARIOUS SIZES FROM 1700 SQ. YARD ONWARDS



READY  
TO USE 10 MSME SHEDS



STRATEGICALLY  
CONNECTED LOCATION



READY TO USE  
INFRASTRUCTURE CONNECTIVITY



## CPC CORE INFRASTRUCTURE FACILITIES



WARE HOUSE  
(6000 MT)



COLD STORAGE  
(5000 MT)



FROZEN STORAGE  
(2000 MT)



MULTI FRUIT  
PROCESSING LINE  
(2 TPH)



F&V GRADING,  
WASHING, SORTING LINE  
(2 TPH)



POTATO  
FLAKES LINE  
(12 TPD)



IQF  
(1 TPH)



FOOD TESTING  
Lab



REEFER VANS  
(12 MT X 4 NOS)  
(6 MT X 4 NOS)



**ENABLING  
INFRASTRUCTURE  
FACILITIES**



CONNECTIVITY  
FOR POWER



CONNECTIVITY  
FOR WATER



CONNECTIVITY  
FOR GAS



PRODUCT  
DISPLAY CENTRE



TRUCK TERMINAL



LOADING &  
UNLOADING



CARGO HANDLING  
SERVICE



EFFLUENT  
TREATMENT PLANT



FIRE FIGHTING  
SYSTEM



STORM WATER  
DRAIN



ROADS



STREET LIGHT



WEIGH BRIDGE



TECHNICAL  
SUPPORT CELL



AMPLE PARKING &  
LANDSCAPE



LOGISTIC



SECURITY



BANK &  
ATM



COURIER



PUBLIC  
TRANSPORT



CANTEEN



DORMITORY



WI-FI ZONE



CCTV



MEDICAL  
CENTRE



GUEST HOUSE



CLUB HOUSE



ADMIN  
FACILITIES



AUDITORIUM



STREET  
FURNITURE



## CONNECTIVITY



### BUSINESS

- PRIME INDUSTRIAL LOCATION SURROUNDED BY ABOUT 4000 SSI UNITS
- AVAILABILITY OF SKILLED AND UNSKILLED MAN POWER
- PROJECT DEVELOPING ON DELHI-MUMBAI INDUSTRIAL CORRIDOR (DMIC)
- DIRECT APPROACH TO FARMERS



### RESOURCES

- NARMADA WATER AVAILABLE AT SITE THROUGH DEDICATED PIPE LINE CONNECTIVITY
- VARIETY OF RAW MATERIAL AVAILABLE YEAR-ROUND
- THE PROJECT HINTERLAND CLUSTER HAS MORE THAN 20 AGRICULTURE AND HORTICULTURE CROPS



### ROAD

- SITE IS AT 5 KMS FROM THE AHMEDABAD MEHSANA STATE HIGHWAY
- SITE IS 2.5 KMS FROM MEHSANA JOTANA STATE HIGHWAY
- AHMEDABAD CITY AT 50 KMS, MEHSANA CITY AT 26 KMS



### AIRPORT

- AHMEDABAD INTERNATIONAL AIRPORT - 47 KMS



### RAILWAY

- AHMEDABAD AT 51 KMS, MEHSANA AT 23 KMS
- JOTANA RAILWAY STATION @ 7 KM
- AMBALIYASAN RAILWAY STATION @ 11 KM (MAJOR STATION ON AHMEDABAD DELHI BROAD GAUGE LINE)



### PORT

- KANDLA SEA PORT @ 293 KMS
- MUNDRA PORT @ 348 KM
- PIPAVAV PORT @ 345 KMZ







**LOCATION MAP**

- 
DISTANCE FROM THE SITE

---

- 
FAMOUS TEMPLE

---

- 
BIG INDUSTRIES

---

- 
SMALL VILLAGE

---

- 
NARMADA CANAL

---

- 
NORTH DIRECTION





ABOUT INFRASTRUCTURE





## ADMINISTRATION BUILDING

### FACILITY DESCRIPTION:

- ADMINISTRATION BUILDING IS DEVELOPED TO INTEGRATE NEEDS OF EVERY PLOT OWNER AT FMFP.
- IT HOUSES THE FACILITIES TO SUPPORT BUSINESS AND COMMERCE SUCH AS BANK, ATM, COURIER SERVICE, EXPORTER'S OFFICE, LOGISTICS OFFICE ETC.
- SPACE PROVISION FOR OFFICES OF STATE NODAL AGENCIES WORKING IN THE AREA OF AGRO AND FOOD PROCESSING IN THE STATE OF GUJARAT.
- FACILITIES TO SUPPORT AMENITIES SUCH AS DORMITORY MEDICAL CENTRE, CRÈCHE AND CANTEEN WITH AMPLE SEATING CAPACITY.
- BUSINESS CENTRE FACILITIES LIKE MEETING ROOMS, CONFERENCE ROOMS AND AUDITORIUM WITH A CAPACITY OF 100 PERSONS ARE PROVIDED FOR CONDUCTING BUSINESS MEETINGS AND RELATED EVENTS.
- 4 STAR BOARDING & LODGING FACILITIES AVAILABLE FOR OVERNIGHT STAY OF PROMOTERS AND SENIOR MANAGEMENT.
- PROVISION OF STAFF ROOMS TO FACILITATE LONG STAY REQUIREMENTS.
- CENTRAL R & D AND QUALITY CONTROL LAB.

### BUILDING DETAILS:

- BUILDING AREA: 3400 SQM
- G+2 STOREY
- PROVISION OF LIFTS
- HIGH END INTERIOR DESIGN FOR ENTIRE ADMINISTRATION BUILDING WITH AESTHETIC LOOK AND FEEL
- ATTRACTIVE FACADE FOR EXTERNAL VIEW OF BUILDING
- ELECTRICAL AND ELV SYSTEM INTEGRATED FACILITY
- UPS WITH CENTRALIZED SERVER PROVISIONS
- TEMPERATURE CONTROLLED AREA



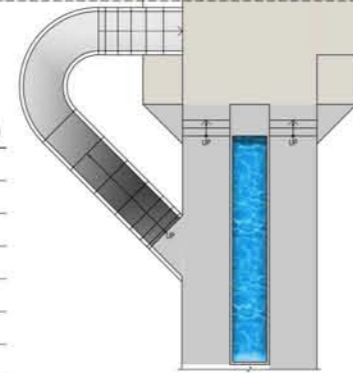


# ADMINISTRATION BUILDING FLOOR PLAN

## GROUND FLOOR



No.	Room Name	Area	Area (SQ.MT.)
1	Reception & Waiting Area	8100 x 4700	38.07
2	Meeting Room	4400 x 2850	12.54
3	Conference Room	9000 x 4700	42.30
4	Store	1500 x 2150	03.23
5	Courier Service	4700 x 4500	21.15
6	Electrical Room	4500 x 4500	20.25
7	Bank	6200 x 4500	27.90
8	Medical Store	4500 x 4500	20.25
9	Medical Center	6050 x 4500	27.23
10	Shop	4550 x 4500	20.47
11	Crèche	4200 x 4350	18.27
12	Toilet	4500 x 4500	20.25
13	Exporter's Office	4250 x 4550	19.34
14	Pantry	1950 x 3350	06.53
15	Logistic Partner	9000 x 3200	28.80



No.	Room Name	Area	Area (SQ.MT.)
16	General Office Space for Clients	4400 x 4550	20.02
17	Gate Office	10700 x 3200	34.24
18	Executive Dinning (24 Person Cap.)	4350 x 9050	39.36
19	Service Area	2500 x 2500	12.50
20	Staff Dinning (86 Person Cap.)	7500 x 13900	104.25
21	Male-Female Toilet	4048 x 4500	18.18
22	Utility	2100 x 4500	09.45
23	Auditorium	15000 x 9050	135.75
24	Kitchen	7500 x 7100	53.25
25	Store	4500 x 2800	12.60
26	Worker's Facility	6650 x 3000	19.95
27	Pot Wash	2900 x 3500	10.15
28	Drinking Water	6400 x 4100	26.24
29	Male-Female Toilet	3850 x 6550	25.22
30	Male-Female Toilet	5950 x 4600	27.37

## FIRST FLOOR



No.	Room Name	Area	Area (SQ.MT.)
1	Marketing, Account and PPC	9000 x 4700	42.30
2	Head	2960 x 3200	09.47
3	Suite, Toilet	6200 x 4500 , 1500 x 2950	27.90 , 04.42
4	UPS/SERVER ROOM	4500 x 4500	20.25
5	Library	4900 x 4500	22.05
6	Reception	6200 x 4850	30.07
7	Utility	4500 x 4500	20.25
8	Head	2960 x 3200	09.47
9	Production	9000 x 4900	44.10
10	Pantry	1950 x 3350	06.53
11	Male Female Toilet	6950 x 4600	27.37
12	Meeting Room	2960 x 3200	09.47
13	Manager	3060 x 3200	09.79

No.	Room Name	Area	Area (SQ.MT.)
14	General Manager	4400 x 4550	20.02
15	Conference Room	10700 x 3200	34.24
16	Meeting Room	4350 x 9050	39.36
17	PA	2500 x 2500	12.50
18	Joint MD, Toilet	7500 x 13900	104.25
19	MD, Toilet	4048 x 4500	18.18
20	Chairman, Toilet	2100 x 4500	09.45
21	Director, Toilet	15000 x 9050	135.75
22	CEO, Toilet	7500 x 7100	53.25
23	Room ( Staff Quarter's For Male + Toilet)	4500 x 2800	12.60
24	Room ( Staff Quarter's For Female + Toilet)	6650 x 3000	19.95
25	LAB	2900 x 3500	10.15
26	Balcony	6400 x 4100	26.24
27	Terrace	3850 x 6550	25.22



## DRY WAREHOUSE BUILDING DETAIL

### FACILITY DESCRIPTION:

- DRY WAREHOUSE FOR RAW MATERIAL, PACKAGING MATERIAL & FINISHED GOODS STORAGE AT AMBIENT TEMPERATURE.
- ENABLED TO ENSURE A CONTINUOUS FLOW OF GOODS TO & FROM THE WAREHOUSE
- HYGIENIC LAYOUT SUITABLE FOR STORAGE OF FOOD PRODUCTS
- CAPABILITY OF HOLDING 8000 – 10000 MT
- CCTV SURVEILLANCE
- 24x7 SECURITY

### BUILDING DETAILS:

- **BUILDING AREA:** 6000 SQM
- **CLEAR HEIGHT:** 10 M
- **CONSTRUCTION MATERIAL:** PRE-ENGINEERED STEEL BUILDING WITH STEEL SHEETING, CONCRETE FOUNDATIONS, CIVIL BRICK WALL UP TO 3.6 M AND CONCRETE GRADE SLAB
- **VENTILATION:** ALUMINIUM FRAME WITH FIXED GLASS LOUVERS, DESIGNED FOR 6-8 AIR CHANGES PER HOUR FOR HUMAN COMFORT VENTILATION.
- FM2 FLOORING CONSIDERED
- SUFFICIENT MOVEMENT AISLE FOR FORKLIFT MOVEMENT
- PROVISION FOR ROOF TOP SOLAR PANEL
- 4 DOCKS FOR LOADING & UNLOADING PURPOSE
- PLANNED FOR MOVEMENT AND LOADING OF 40 FT TRAILER

MODEL : DRY WAREHOUSE





## MSME SHEDS DETAIL .....

### FACILITY DESCRIPTION:

- BUILD UP SHEDS OF @ 420 SQ MTR
- 10 UNITS TO HOUSE MICRO, SMALL AND MEDIUM SIZE FACILITIES IN FOOD PROCESSING INDUSTRY.
- FIRE FIGHTING SYSTEM
- POWER CONNECTION

### BUILDING DETAILS:

- **UNIT AREA:** APPROX.. 420 SQM
- **TOTAL NO. OF UNITS:** 10
- **CLEAR BUILDING HEIGHT:** 6.1 M
- RCC FRAME STRUCTURE UNIT
- DOME SHAPED SELF SUPPORTED STEEL ROOFING SYSTEM
- PROVISION OF ROLLING SHUTTERS, DOORS AND WINDOWS
- PROVISION OF TOILETS AND CONNECTIONS TO CENTRAL WATER SUPPLY AND EFFLUENT DISCHARGE SYSTEM





## CORE PROCESSING CENTRE (CPC) BUILDING DETAIL .....

### FACILITY DESCRIPTION:

- CPC IS THE CORE PROCESSING CENTRE OF FANIDHAR MEGA FOOD PARK.
- FACILITIES IN THIS PROCESSING CENTRE ARE DESIGNED FOR COMMON APPLICATION AND COMMON USE FOR VARIETY OF FOOD PROCESSING INDUSTRIES COMING INSIDE THE MEGA FOOD PARK.
- IT COMPRISES OF THE FOLLOWING PROCESS UNITS AND STORAGE FACILITIES -
  - I. POTATO FLAKES PROCESSING UNIT WITH A PRODUCTION CAPACITY OF 1.2 MT/HR
  - II. INDIVIDUAL QUICK FREEZING UNIT WITH A PRODUCTION CAPACITY OF 1 MT/HR
  - III. MULTI-FRUIT PROCESSING UNIT WITH A PRODUCTION CAPACITY OF 2 MT/HR
  - IV. POSITIVE TEMPERATURE COLD STORAGE ( 0 – 10 DEGREE C ) WITH STORAGE CAPACITY OF 5000 MT .
  - V. SUB ZERO TEMPERATURE COLD STORAGE ( - 20 DEGREE C ) WITH STORAGE CAPACITY OF 2000 MT.

### BUILDING DETAILS:

- **BUILDING AREA:** 8500 SQM
- **CLEAR HEIGHT:** 8 M
- **CONSTRUCTION MATERIAL:** PRE-ENGINEERED STEEL BUILDING WITH STEEL SHEETING, CONCRETE FOUNDATIONS, SELF SUPPORTED PUFF PANEL WALLS, PUFF PANEL CEILING AND WALL PARTITIONS, AND CONCRETE GRADE SLAB.
- **VENTILATION:** COMFORT COOLING SYSTEM FOR PROCESSING AREA USING FAN-COIL UNITS AND REFRIGERATION SYSTEM MAINTAINING 28-32 DEGREES TEMPERATURE.
- FM2 FLOORING CONSIDERED
- PROVISION FOR ROOF TOP SOLAR PANEL

### UTILITY INFRASTRUCTURE FOR CPC:

- SOLID FUEL FIRED BOILER OF CAPACITY 11 TPH
- CHILLER
- HOT WATER SYSTEM
- COMPRESSED AIR SYSTEM
- RO WATER SUPPLY
- WATER TREATMENT PLANT
- REFRIGERATION SYSTEM FOR FREEZER, IQF UNIT AND COLD STORE APPLICATIONS.





## ROAD SECTIONS IN MEGA FOOD PARK DETAIL

### FACILITY DESCRIPTION:

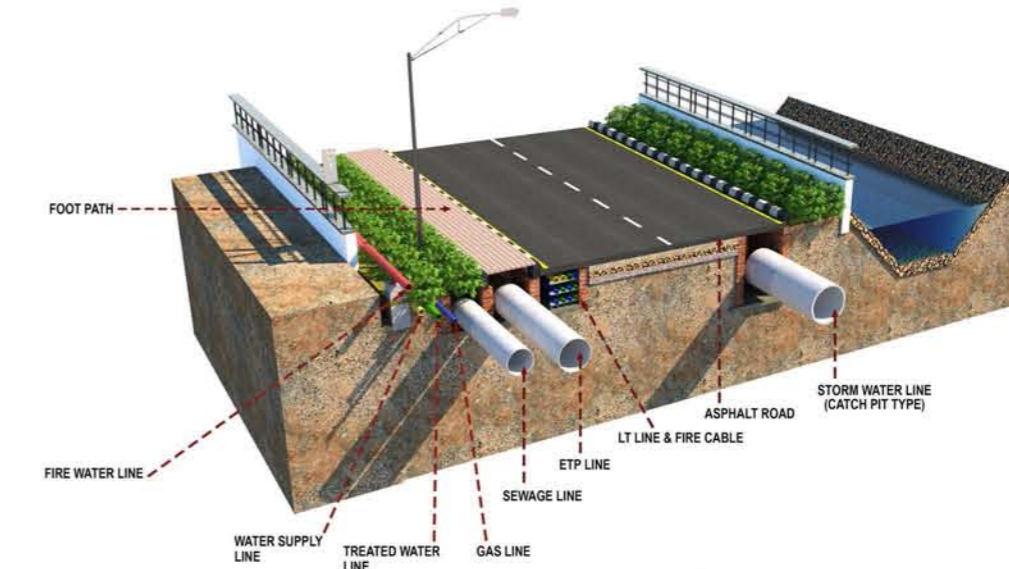
- TOTAL RIGHT OF WAY OF APPROX.. 38,000 SQM
- SERVICE CORRIDOR TO FACILITATE PLUG AND PLAY SERVICE CONNECTIVITY TO PLOT OWNERS
- SERVICE INFRASTRUCTURE INCLUDES FOLLOWING CENTRALIZED NETWORK FOR ALL UTILITIES-
  - I. SEWAGE & EFFLUENT NETWORK
  - II. STORM WATER NETWORK WITH PUMPING STATIONS
  - III. WATER SUPPLY NETWORK
  - IV. TREATED WATER SUPPLY NETWORK
  - V. PROVISIONAL CORRIDOR FOR GAS CONNECTION
  - VI. FIRE-HYDRANT NETWORK FOR PARK
  - VII. OVERHEAD HT POWER NETWORK

- VIII. UNDERGROUND CHAMBER AND PIPE NETWORK FOR LT POWER AND ELV POWER NETWORK
- IX. CENTRALIZE CCTV AND PA SYSTEM
- X. BITUMINOUS ROAD CRUST HAVING A BEARING CAPACITY OF 40 TON/M2
- XI. ROAD SECTIONS TO FACILITATE SIMULTANEOUS MOVEMENT AND CROSSING OF VEHICLES WHERE EVER NECESSARY WITH APPROPRIATE TURNING RADIUS

### TOTAL THREE ROAD SECTIONS HAVE BEEN PROVIDED FOR -

- A. 30 MTRS FOUR LANE WITH MEDIAN
- B. 20 MTRS TWO LANE WITH MEDIAN
- C. 12 MTR TWO LANE

## 12 MT. ROAD



## 20 MT. ROAD



## 30 MT. ROAD

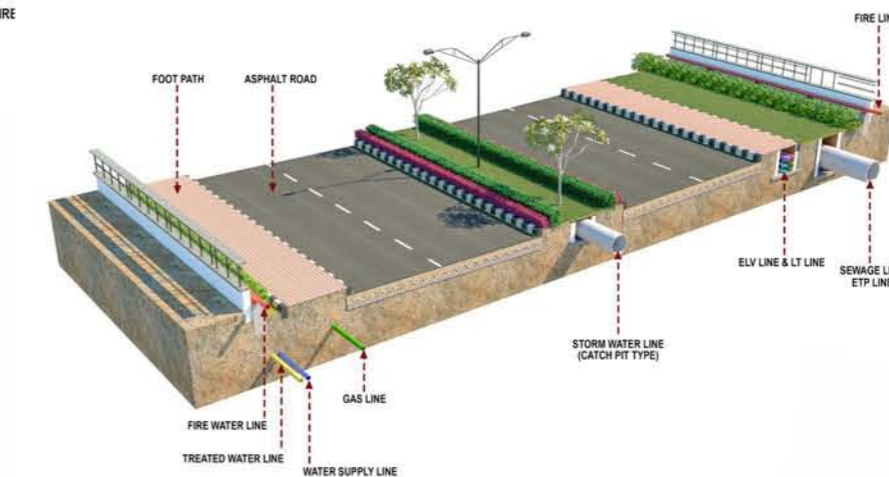


Image used for Representation only



## WASTE MANAGEMENT SYSTEM DETAIL

### SYSTEM DESCRIPTION:

- INFRASTRUCTURE DEVELOPED FOR SEWAGE AND THE EFFLUENT WASTE GENERATION OF 50 LITRES/SQM.
- SINGLE COLLECTION NETWORK FOR SEWAGE AND EFFLUENT WASTE IS CONSIDERED.
- MANHOLES ARE ALSO PROVIDED WHEREVER CHANGE IN DIRECTION, SLOPE AND DIAMETER OF PIPELINES ARE ENCOUNTERED THROUGHOUT THE NETWORK.
- SIZES AND SLOPES ARE ARRIVED FOR A PEAK FLOW AND MINIMUM SELF-CLEANSING VELOCITY OF 0.6 M/SEC.
- SEWAGE AND EFFLUENT ARE COLLECTED IN SUMP AND PUMPED TO THE CENTRAL EFFLUENT TREATMENT PLANT WITH CAPACITY OF 600 KLD.
- EFFECTIVE SOLID WASTE MANAGEMENT SYSTEM SHALL BE AUGMENTED FOR EITHER THROUGH PORTABLE SOLID WASTE BIO DEGRADATION UNITS OF ANY OTHER SUITABLE MECHANISM.





## WATER TREATMENT DETAIL

### PROPOSED WATER TREATMENT FACILITY IN THE FOOD PARK:

#### SOURCE OF WATER:

- THE RAW WATER SOURCE IS NARMADA WATER & BORE-WELL WATER
- THE TOTAL WATER HOLDING CAPACITY IS 2500M<sup>3</sup>

#### WATER TREATMENT:

- THE MAJOR COMPONENTS OF WATER TREATMENT SYSTEM ARE CLARIFIER, ULTRAFILTRATION SYSTEM, SOFTENER, RO, DOSING SYSTEM & PUMPS.

#### A. CLARIFIER:

- THE CLARIFIER IS SOLID CONTACT TYPE WITH CAPACITY OF 110 M<sup>3</sup>/HR.
- IT WILL BE USED TO CLEAR THE OPEN SOURCE WATER FROM COLLOIDAL SILICA, TSS AND TURBIDITY.

#### B. ULTRAFILTRATION:

- THE UF OF 90 M<sup>3</sup>/HR IS PROPOSED FOR THE FACILITY.
- THE UF IS WITH AUTO BACKWASH.

#### C. SOFTNER:

- SOFTENER CAPACITY OF 22 M<sup>3</sup>/HR DESIGNED FOR CORE PROCESSING CENTRE
- HAVING AUTO BACKWASH SYSTEM.

#### D. RO PLANT:

- THE RO PLANT CAPACITY 6 M<sup>3</sup>/HR.
- TO REMOVE THE TDS FROM THE WATER.
- PROVIDED FOR CPC FACILITY.

#### E. DOSING SYSTEM:

- THE DOSING OF POLYELECTROLYTE OR ALUM IS USED TO MAINTAIN THE PH OF THE WATER.
- THE **UV TUBES / CHLORINE DISINFECTION SYSTEM** AS PER PROCESS REQUIREMENT.

#### F. STORAGE TANK:

- ALL THE STORAGE TANKS SHALL BE MADE OF RCC AND CAPACITIES ARE AS FOLLOW:

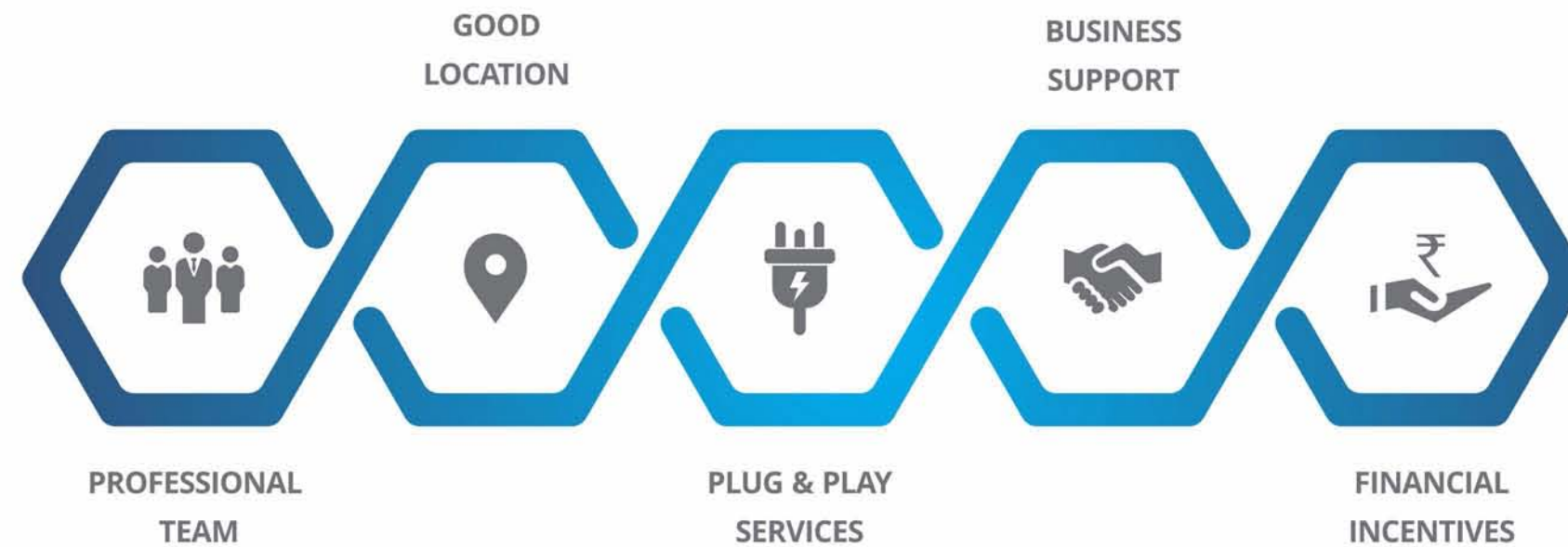
SR. NO.	DESCRIPTION	VALUE	UNIT
1	RAW WATER	800	M <sup>3</sup>
2	FIRE WATER	400	M <sup>3</sup>
3	TREATED WATER	1300	M <sup>3</sup>
4	FILTERED WATER - CORE PROCESSING CENTRE	180	M <sup>3</sup>
5	SOFT WATER - CORE PROCESSING CENTRE	132	M <sup>3</sup>
6	RO WATER - CORE PROCESSING CENTRE	40	M <sup>3</sup>

MODEL : ETP





## ADVANTAGES



## INFRASTRUCTURE BENEFITS

- ESSENTIAL FACILITIES SUCH AS WAREHOUSE, COLD STORAGE, FROZEN STORE, FOOD TESTING LAB, PROCESSING LINES, ETC.
- EXPEDITE SERVICES ARRANGED IN **PLUG AND PLAY** FORMAT
- **PROVISION OF UTILITIES** SUCH AS ELECTRICITY AND WATER CONNECTIVITY
- **OVER HEAD** ELECTRICITY LINE
- **COMPATIBLE INFRASTRUCTURE** WITH COMPLETELY VACANT LAND FOR USE WITH NO SUPER BUILT UP
- **STATUTORY CLEARANCE ASSISTANCE** SUPPORT
- ASSISTANCE IN **TIE UP** FOR TERM LOAN & WORKING CAPITAL
- **IMPORT EXPORT COORDINATORS** AVAILABLE FOR LOGISTICS ADVICE
- **PROFESSIONAL MARKETING GUIDANCE** FROM A QUALIFIED MARKETING EXPERT
- **TECHNICAL MANPOWER SUPPLY** (ACCESS TO SUITABLY TRAINED, QUALIFIED AND EXPERIENCED RESOURCES)
- **EFFLUENT TREATMENT PLANT**
- **ADMINISTRATIVE BLOCK** WITH MEETING ROOMS, COMMERCIAL CENTER AND PRODUCT DISPLAY AREA
- **WORLD CLASS AMBIENCE** TO THE UNIT HOLDER
- **PLUG & PLAY** READY TO USE BUILT UP SHEDS (MSME)



# MASTER LAYOUT

## AREA TABLE

UNIT NO.	SQ. MT.	SQ. YARDS
1	2310.10	2762.85
2	1858.98	2223.31
3	2617.53	3130.53
4	3137.65	3752.59
5	5113.85	6116.10
6	3548.80	4244.32
7	1972.25	2358.78
8	1905.28	2278.69
9	4284.96	5123.34
10	2622.48	3136.45
11	2887.43	3453.33
12	2887.43	3453.33
13	4114.10	4920.41
14	2622.48	3136.45
15	2887.43	3453.33
16	2260.02	2702.95
17	2887.43	3453.33
18	5430.90	6495.28
19	2887.43	3453.33
20	2140.53	2560.04
21	2110.06	2523.60
22	2444.49	2923.58
23	2748.02	3286.59
24	1878.05	2246.12
25	1486.87	1778.28
26	2235.22	2673.29
27	2225.22	2661.33
28	2225.22	2661.33
29	2225.22	2661.33
30	3146.43	3763.09
31	1729.41	2068.35
32	1786.42	2136.53
33	1843.43	2204.72
34	1766.09	2112.22
35	4399.16	5262.34
36	3364.80	4024.26
37	3449.55	4125.62
38	2682.85	3208.65
39	4284.22	5123.87

## MSME AREA TABLE

UNIT NO.	SQ. MT.	SQ. YARDS
M-1	470.93	563.23
M-2	461.25	551.65
M-3	461.25	551.65
M-4	461.25	551.65
M-5	461.25	551.65
M-6	461.25	551.65
M-7	476.62	570.03
M-8	425.40	508.77
M-9	386.10	461.77
M-10	351.26	420.10



## ADVANTAGE of MEHSANA



INDUSTRIES



BUS CONNECTIVITY



EDUCATIONAL INSTITUTES



BANKS



RAIL CONNECTIVITY



HOSPITALS



FIRE STATION



TRANSPORTATION

## OUR ASSOCIATES

Project Designed by  
**vms**  
ENGINEERING + ARCHITECTURE

PMC  
**technopak**

**CRISIL**  
An S&P Global Company

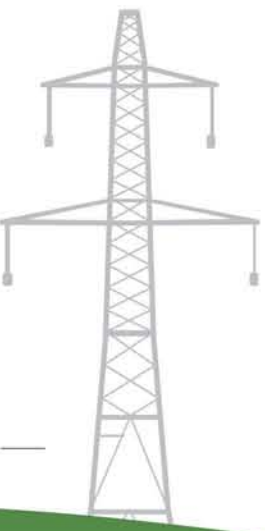
PMA  
**SREI**  
Together We Make Tomorrow Happen

**Acuite**  
RATINGS & RESEARCH

Marketing & Designed by  
**brim**

“ A SATISFIED CUSTOMER IS THE BEST BUSINESS STRATEGY OF ALL. ”

— Michael LeBoeuf —





**fanidhar<sup>®</sup>**  
**MEGA FOOD PARK**  
khet se bazaar tak...



**Project site:** Village Mudarda, Tal. Jotana - 384421,  
Dist. Mehsana, Gujarat, INDIA.

**Registered Office:** 10-11, Orchid The Shopping Mall,  
Thaltej Shilaj Road, Thaltej, Ahmedabad - 380059, Gujarat, INDIA.

**+91 95864 32323 | +91 95869 32323**  
**fmfp.co.in | info@fmfp.co.in**

