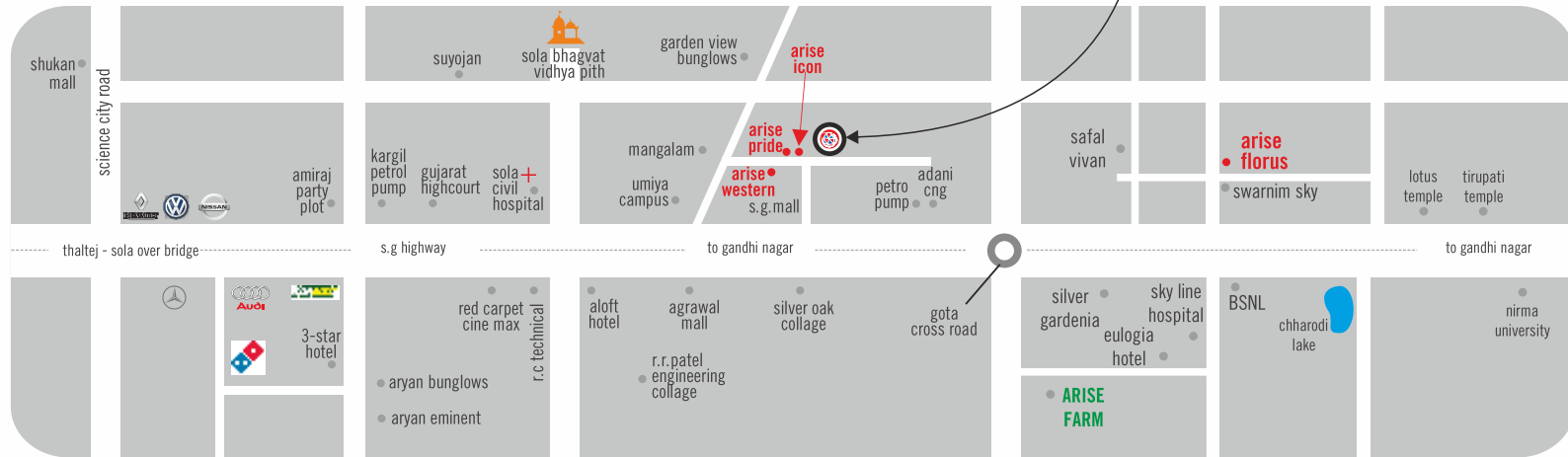


LOCATION MAP :



Nr. Sola Bhagwat, Umiya Campus, Off.S.G Highway, Ahmedabad - 380060

Contact :

M. +91 80008 84488, 80008 82288

E-mail : info@arisegroup.in

www.arisegroup.in

DEVELOPERS :



arise developers

ARCHITECTS :

VASTU NIRMAN

AR. BRJESH PATEL (ahmedabad)
+91 93270 30189

STR. DESIGNER :

HIMANSHU PATEL
(ahmedabad)

Reg No.: PR/GJ/AHMEDABAD/AHMEDABAD CITY/AUDA/RAA03232/240718

Developers reserve the rights for alteration of specification and design. I all dimensions / area are approximate, average & subject to variations. Irregular payments shall cause cancellation of booking. AMC, electricity, legal expenses, G.S.T & other GOVT charges, stamp duty & registration, maintenance charges, maintenance deposit & membership fees shall be borne by the members. this brochure is not to be treated as part of the legal document, it is for the easy presentation of the project.

Disclaimer :
the details, facts, specifications, figures mentioned in brochure are indicative for information purpose only and are subject to modifications/compliance required as per RERA act.

TIMELESS GRANDEUR



arise™
ample
3 & 4 BHK
LUXURIOUS LIVING SPACE...

BECOME THE PRIVILEGED FEW BY RESIDING HERE,



ARISE AMPLE...

completed projects



current project

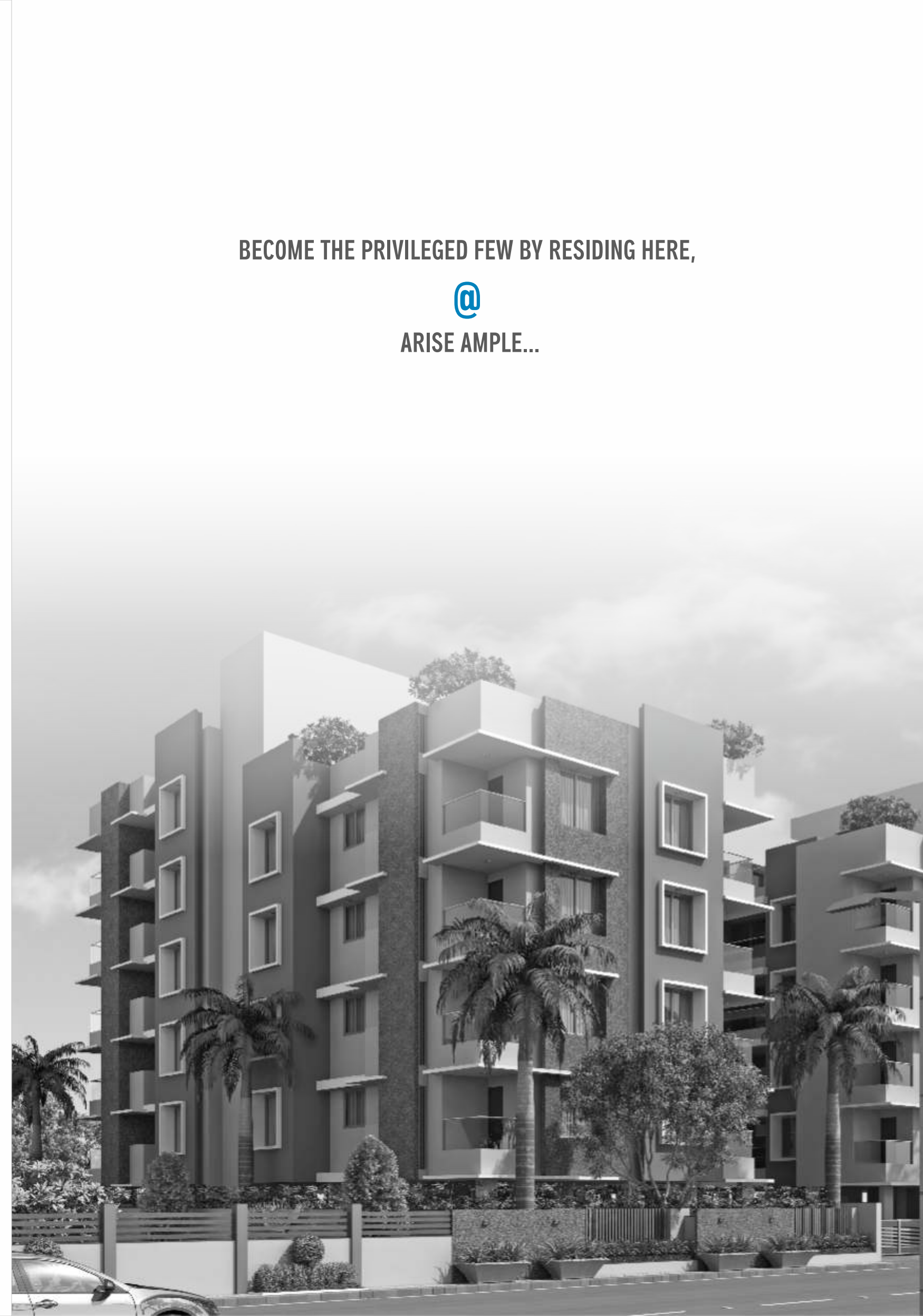


ARISE GROUP is a professionally managed organization engaged in imparting a wide spectrum of services in the domain of real estate construction, Recognized as one of the most reliable firms, we are a concern that works on the virtues of efficiency, reliability, quality and flexibility.

After the successful offerings like Arise Pride, Arise Icon, Arise

Western and Arise Florus (on-going project),

Arise Ample is going to be one of its kind residential project.





AN ENTICING MIX OF MODERNITY AND NATURE !

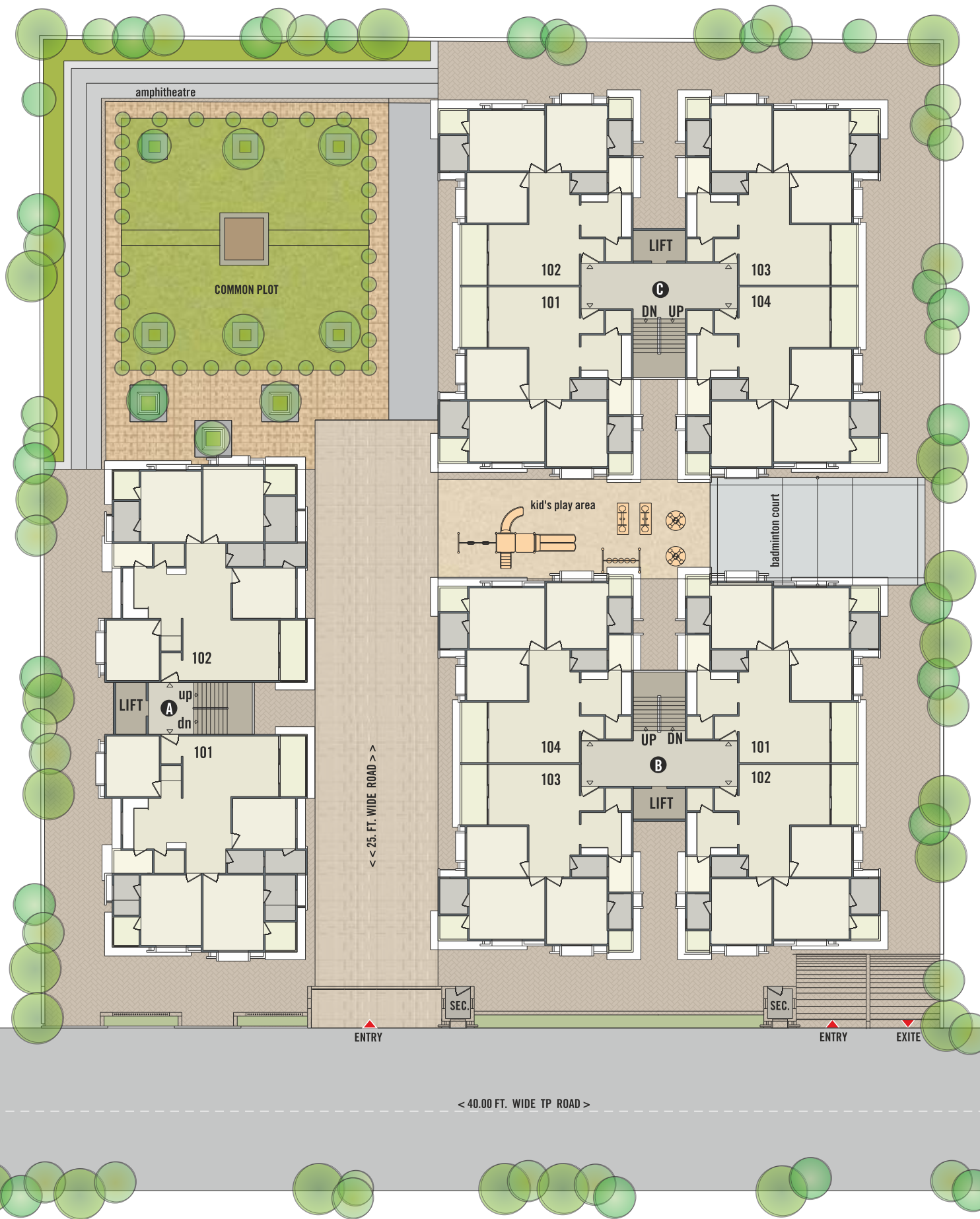


TYPICAL
FLOOR PLAN

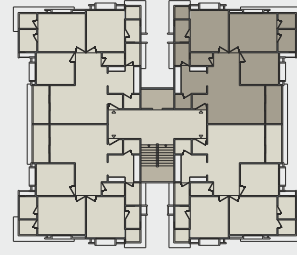


TOP
FLOOR PLAN

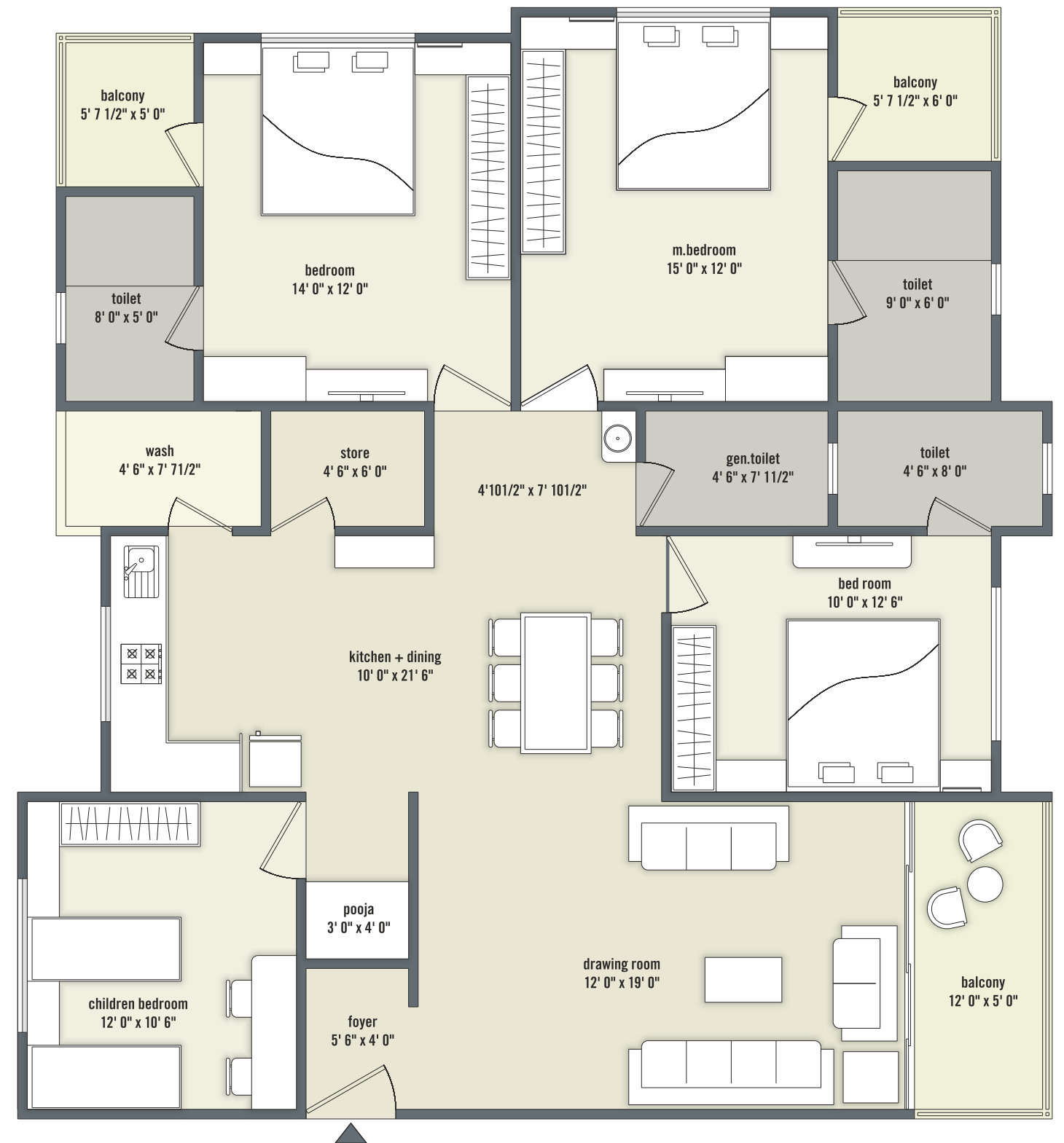
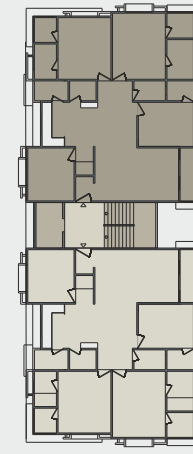
arise™
ample
3 & 4 BHK
LUXURIOUS LIVING SPACE...



3BHK
UNIT PLAN
BLOCK - B - C



4BHK
UNIT PLAN
BLOCK - A





A MORE ECO-FRIENDLY WAY OF LIVING

SPECIFICATION :

- ♻️ **STRUCTURE :**
earthquake resistant frame structure.
- ♻️ **FLOORING :**
double charge vitrified tiles flooring in drawing, dining, kitchen, bedroom. china mosaic with waterproof on terrace
- ♻️ **KITCHEN/STORE :**
mirror polished granite platform with full wall dado of glazed tiles with s.s. sink.
- ♻️ **TOILET / PLUMBING**
colour glazed tiles full wall dado and european type w.c. pan (Wallhunk) in toilets. standard quality c.p. fitting.
- ♻️ **DOOR / WINDOWS :**
all laminated doors with s.s. fittings and powder coated aluminium windows.
- ♻️ **ELECTRIFICATION :**
concealed copper wiring with adequate number of points in all rooms.
tv and telephone point in drawing room and master bedroom.
mcb or elcb provision in distribution board.

